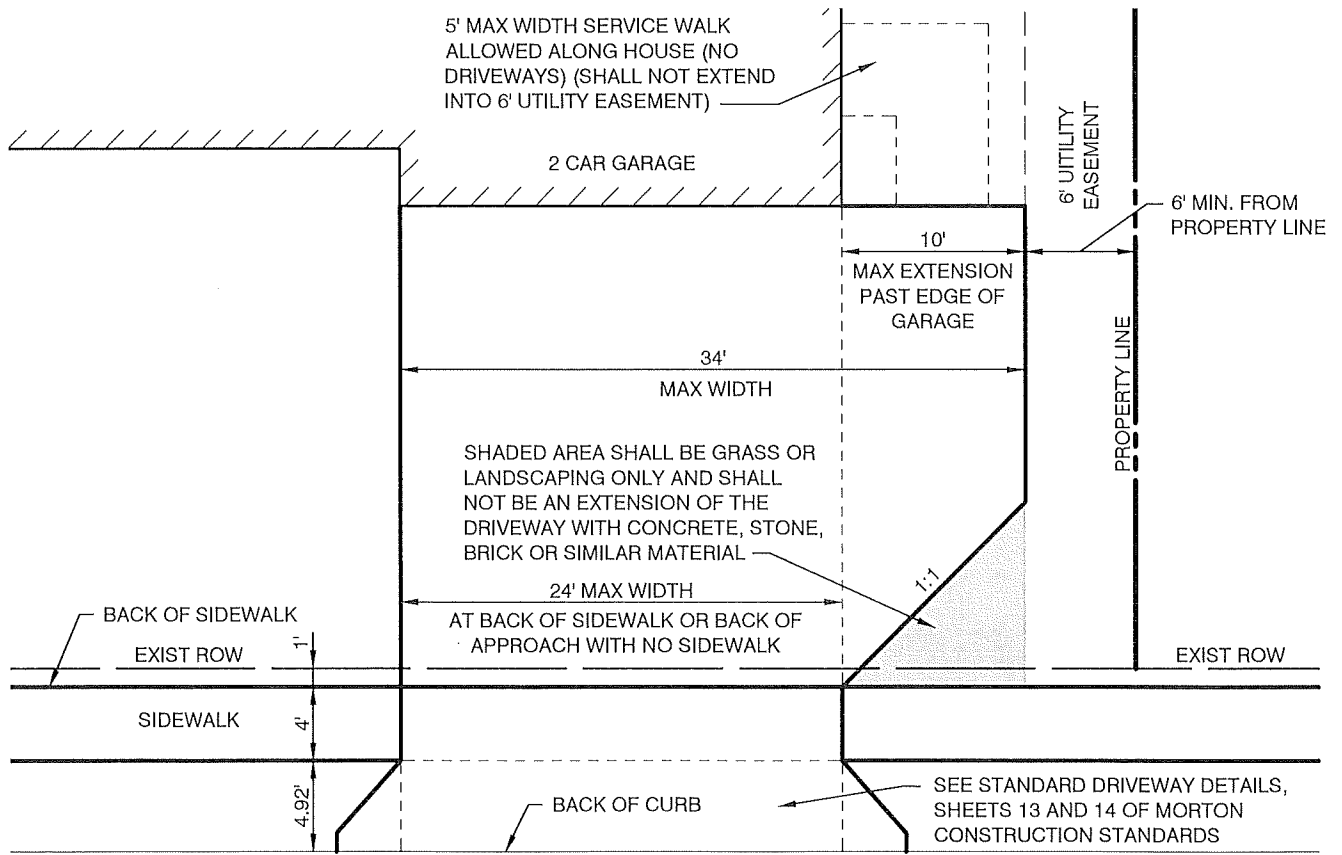
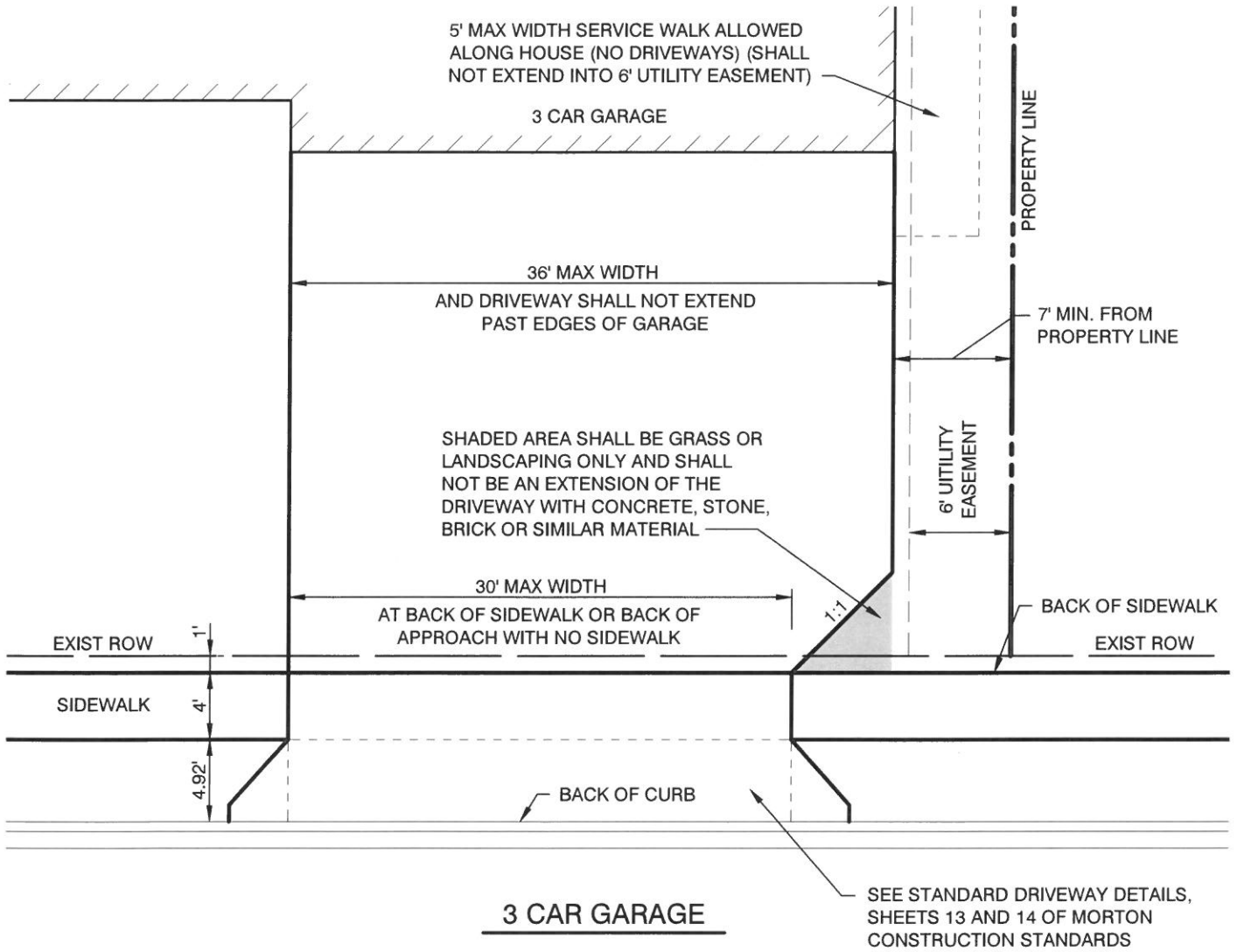
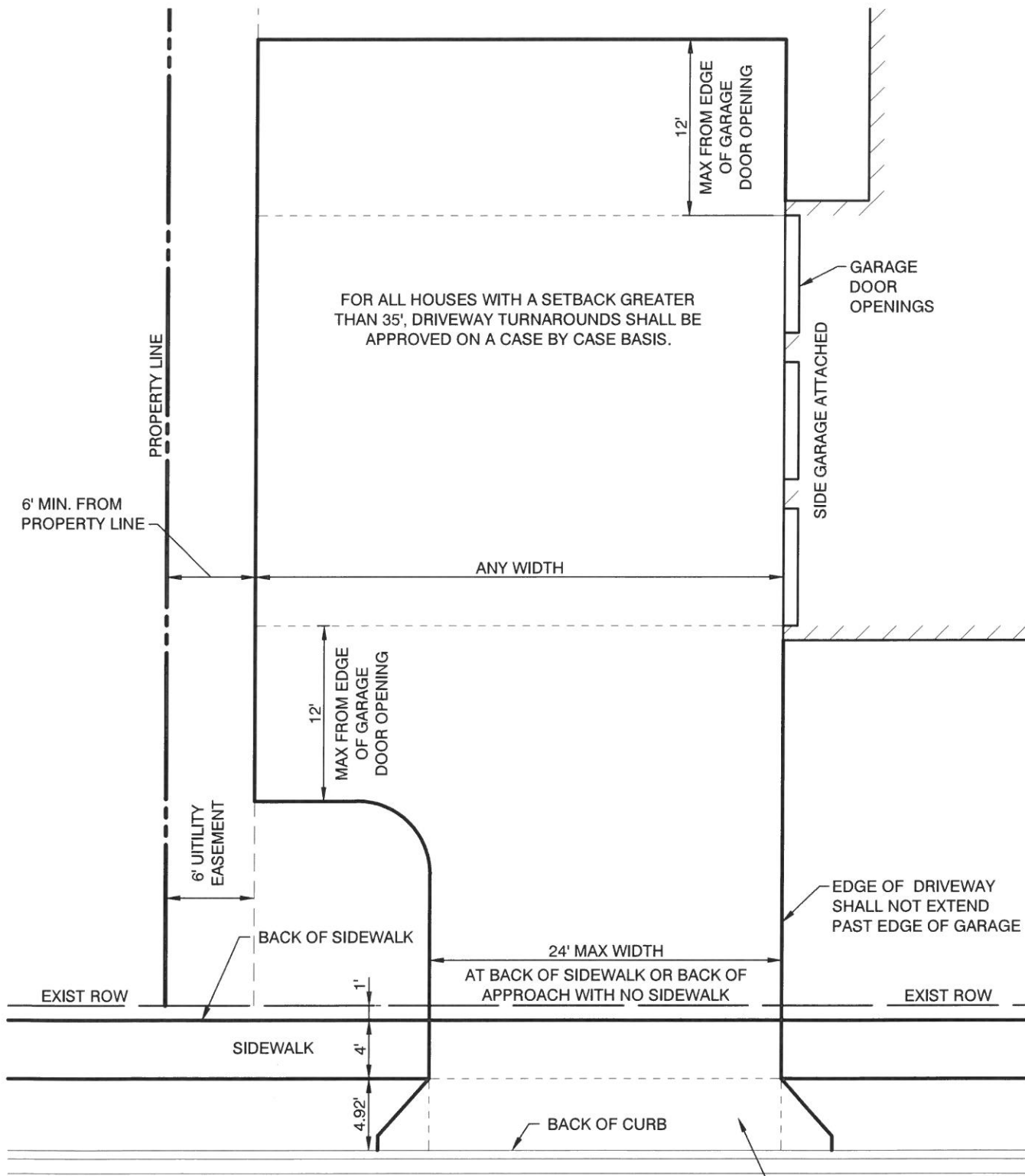


**1 CAR GARAGE**



**2 CAR GARAGE**





FOR ALL HOUSES WITH A SETBACK GREATER THAN 35', DRIVEWAY TURNAROUNDS SHALL BE APPROVED ON A CASE BY CASE BASIS.

SEE STANDARD DRIVEWAY DETAILS, SHEETS 13 AND 14 OF MORTON CONSTRUCTION STANDARDS

**SIDE GARAGE ATTACHED**